


2022 ASHE Update

May 5, 2022
AlaSHE Spring Conference
Pensacola Beach, Florida



© 2022 American Society for Health Care Engineering,
a professional membership group of the American Hospital Association
155 N. Wacker Drive, Suite 400 | Chicago, IL 60606
ashe.org | ashe@aha.org | 312-422-3800

1

Disclaimer

The views and opinions expressed in this presentation are purely those of the presenters and shall not be considered the official position of The American Hospital Association or the American Society for Health Care Engineering.

The guidance provided in this presentation shall not be considered professional design or engineering advice.

The information provided may not apply to a viewer's specific situation and is not a substitute for application of the viewer's own independent judgment or the advice of a competent professional.

ASHE does not make any guarantee or warranty as to the accuracy or completeness of any information provided. ASHE and the authors disclaim liability for personal injury, property damage, or other damages of any kind, whether special, indirect, consequential, or compensatory, that may result directly or indirectly from use of or reliance on information from this presentation.



2



Shay Rankhorn, SASHE, CHFM, CHC

ASHE President
Senior Director, Facilities Management
Quorum Health
Brentwood, TN



© 2022 American Society for Health Care Engineering

3

The American Society for Health Care Engineering (ASHE)



© 2022 American Society for Health Care Engineering

4

ASHE Mission, Vision and Values

Mission:

Dedicated to optimizing the health care physical environment

Vision:

To engage stakeholders in the creation of health care environments that are optimal for healing.

Core Values:

Integrity, Innovation, Fellowship and Stewardship

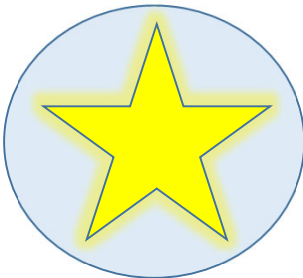


© 2022 American Society for Health Care Engineering

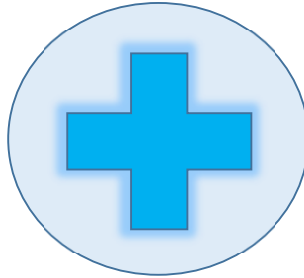
ASHE STRATEGIC PLAN

© 2022 American Society for Health Care Engineering

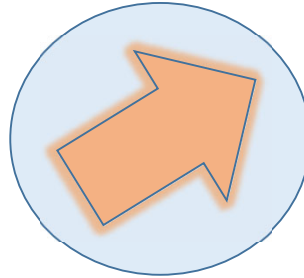
ASHE's Strategic Goals



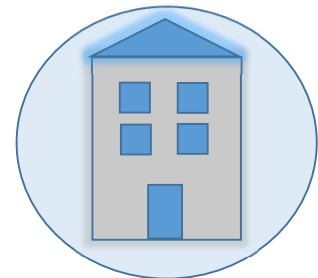
Operational
Excellence



Member
Inclusion



Career
Advancement,
Succession
Planning and
Workforce



Capital
Planning



© 2022 American Society for Health Care Engineering

7

Strategic Plan Deliverables for 2022

Operational Excellence – Help ASHE members achieve and maintain the highest standards in health care facility management.

- “Operational excellence” definition
- Criteria for health care facilities staff
- Sustainability and de-carbonization efforts gap analysis
- Goals and programs to support sustainability and de-carbonization

© 2022 American Society for Health Care Engineering



8

Strategic Plan Deliverables for 2022

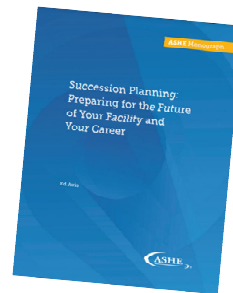
Member Inclusion – Engage with and better understand the needs of all ASHE members, and to respond to those needs effectively.

- ASHE Chapter needs
- ASHE member segments and needs
- New member onboarding
- Internal member data needs
- Young professional and early career member representation
- "Shadow a Member Leader" program

Strategic Plan Deliverables for 2022

Career Advancement, Succession Planning and Workforce – Provide training and certification programs, and other tools and resources to help members secure career advancements.

- ASHE Succession Planning Monograph improvements



Volunteer, Enhance your Career, Make a Difference

- Help support the work of ASHE's strategic plan
- Opportunities to volunteer and lend your expertise
- Committees, Councils, Task forces
- Visit the myASHE online community to learn more and sign up

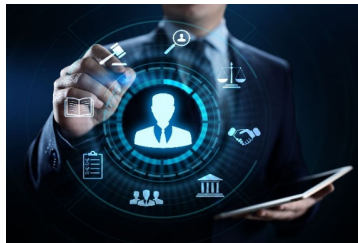
<https://my.ashe.org/home>



© 2022 American Society for Health Care Engineering

11

Our Partnership with Chapters



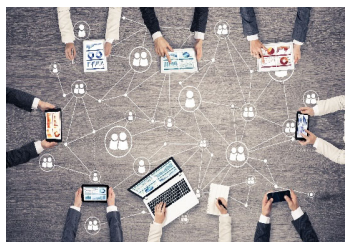
Advocacy



Education



Networking



Communication



Financial Support



© 2022 American Society for Health Care Engineering

12

What does ASHE have to offer?

MEMBERSHIP... WIIFM?

© 2022 American Society for Health Care Engineering

13

Why Should YOU Join ASHE?

- Education
- Advocacy
- Information
- Career Support
- Professional Connections
- And MORE!

ashe.org/join



© 2022 American Society for Health Care Engineering



14

What does ASHE have to offer?

ADVOCACY

© 2022 American Society for Health Care Engineering

15

Advocacy



National Strategy

© 2022 American Society for Health Care Engineering



16

ASHE Advocacy Agenda

- Unified Code
- Reduce Regulatory Burden
- Preparing for the Future
- Sustainability
- Member Engagement



© 2021 American Society for Health Care Engineering

17

Advocacy



Wins

© 2022 American Society for Health Care Engineering



18

Advocacy



Liaisons

© 2022 American Society for Health Care Engineering



Keep Your Health Care Facilities in Compliance

ASHE RESOURCES FOR YOU ... SEARCH [ASHE.ORG/TOOLS](https://www.ashe.org/tools)



© 2022 American Society for Health Care Engineering

What does ASHE have to offer?

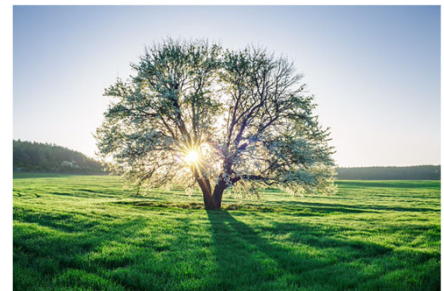
SUSTAINABILITY PROGRAM

© 2022 American Society for Health Care Engineering

21

Sustainability in Health Care

AHA hospitals are dedicated to working together to become more sustainable by adopting environmental, social, and fiduciary practices that support healthy, equitable, and resilient environments and communities. In support of its mission of advancing the health of individuals and communities, the AHA provides strategic thought leadership, resources, and programs to support health care organizations pursuing sustainability.

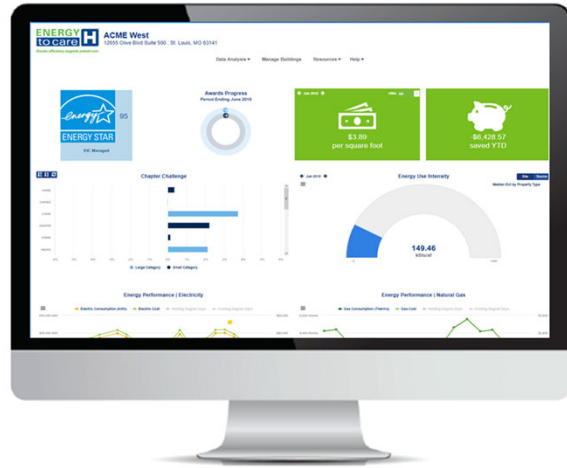


© 2022 American Society for Health Care Engineering

22

ASHE's Sustainability Resources

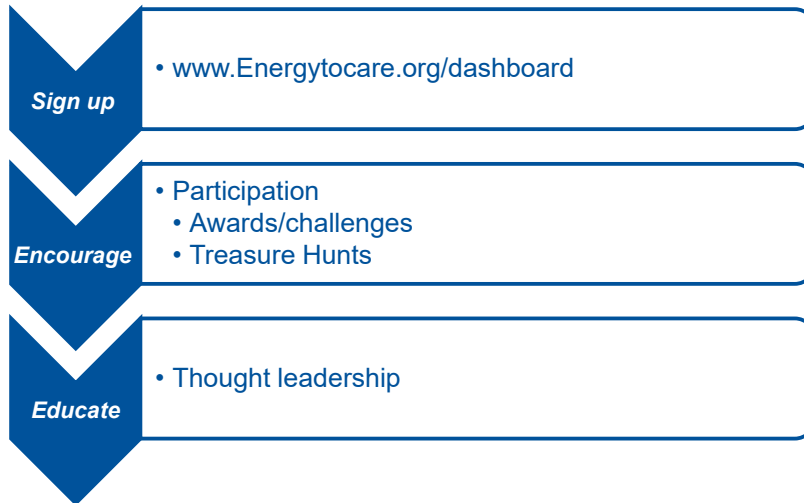
ENERGY to care H
Greater efficiency supports patient care.
energytocare.org



© 2022 American Society for Health Care Engineering

23

Key Takeaways



© 2022 American Society for Health Care Engineering

24

What does ASHE have to offer?

EDUCATION

© 2022 American Society for Health Care Engineering

25

ASHE Education ... Something for Everyone



LEARN
ENGAGE
GROW

ashe.org/education

© 2022 American Society for Health Care Engineering



26

Types of Education



In-Person Events

Live Online

E-Learning

Webinars

Lunch & Learn's

On-Demand

YouTube

Scheduled Events

- Conferences
- ASHE Academy
- Hosted
- Private
- Customize Packages

© 2022 American Society for Health Care Engineering



27

ASHE Academy



ASHE Academy Nashville, TN – May 2-6, 2022

	MONDAY MAY 2	TUESDAY MAY 3	WEDNESDAY MAY 4	THURSDAY MAY 5	FRIDAY MAY 6
Certified Health Care Constructor (CHC) Exam Review				1-day CHC Exam Review	CHC Exam*
Certified Health Care Facility Manager (CHFM) Exam Review Program				1-day CHFM Exam Review	CHFM Exam*
Health Care Construction Workshop	HCCW				
Managing Infection Prevention in Health Care Facilities			1-day Program		
Physical Environment Survey Readiness: Life Safety Module	LS				
Physical Environment Survey Readiness: The Care Environment Module			CE		
Physical Environment Survey Readiness: Emergency Management Module		EM			
Working in Health Care: Certified Health Care Physical Environment Worker Education & Exam Review					1-day Program (Full)

© 2022 American Society for Health Care Engineering

28

Types of Education



In-Person Events

Live Online

E-Learning

Webinars

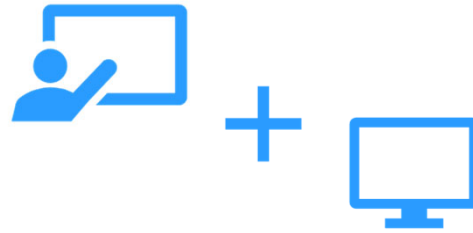
Lunch & Learn's

On-Demand

YouTube

Scheduled Events

- Live Instructor
- Online Platform



© 2022 American Society for Health Care Engineering



29

Types of Education



In-Person Events

Live Online

E-Learning

Webinars

Lunch & Learn's

On-Demand

YouTube

- Online
- Learn at your own pace

© 2022 American Society for Health Care Engineering



30

Types of Education



In-Person Events

Live Online

E-Learning

Webinars

Lunch & Learn's

On-Demand

YouTube

Safe Day One®

- New e-Learning Program!
- Health Care Orientation & Safety Training



© 2021 American Society for Health Care Engineering

31

Types of Education



In-Person Events

Live Online

E-Learning

Webinars

Lunch & Learn's

On-Demand

YouTube

**Pure
ASHE
Content!**



© 2022 American Society for Health Care Engineering

32

Types of Education



In-Person Events

Live Online

E-Learning

Webinars

Lunch & Learn's

On-Demand

YouTube



© 2022 American Society for Health Care Engineering



Types of Education



In-Person Events

Live Online

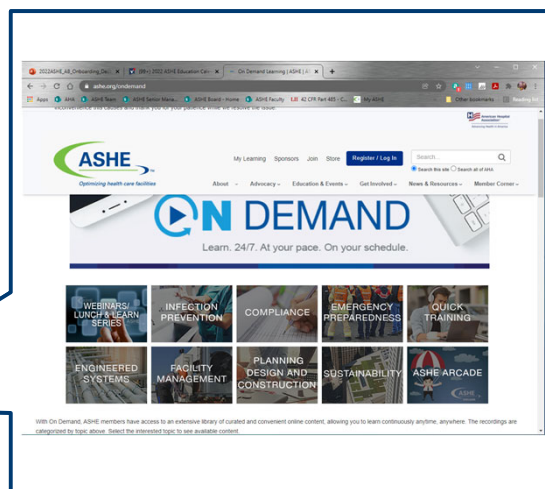
E-Learning

Webinars

Lunch & Learn's

On-Demand

YouTube



© 2022 American Society for Health Care Engineering



Types of Education



In-Person Events

Live Online

E-Learning

Webinars

Lunch & Learn's

On-Demand

YouTube



© 2022 American Society for Health Care Engineering

35

New Programs for 2022



ICRA 2.0

- ICRA was created by ASHE
- ICRA was purposely made public domain
- ICRA 2.0
 - Updates methodology and checks and balances
 - Adds operational piece
 - Provides better clarity in the application of ICRA
- Training course will compliment the new tool
 - Will be offered at Annual Conference



Read more in [HFM](#) or download at <https://www.ashe.org/icra2>

© 2022 American Society for Health Care Engineering

36

Save-the-Dates for ASHE Education



July 17-20, 2022 | Boston, MA



March 13-15, 2023 | Phoenix, AZ

© 2022 American Society for Health Care Engineering

37

What does ASHE have to offer?

CERTIFICATION

© 2022 American Society for Health Care Engineering

38

Certification



**Certified Health
Care Constructor**



**Certified Health Care
Facility Manager**



ADVANCE PATIENT SAFETY ... GET CERTIFIED

© 2022 American Society for Health Care Engineering



Everyone Should Be Certified



MINIMIZE PATIENT RISK ... PROMOTE ASHE CERTIFICATION

What does ASHE have to offer?

PUBLICATIONS

© 2022 American Society for Health Care Engineering

41

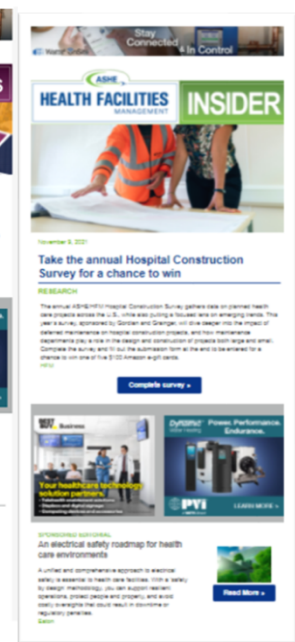
HFM Magazine Print & Online & HFM e-Newsletters

Magazine publishes 10x/year in print and digital format.

Chance to earn continuing education credits.

HFM and PDC hot topics/news direct to your inbox.

Subscribe today!
hfmmagazine.com/subscribe



© 2022 American Society for Health Care Engineering

42

Monographs

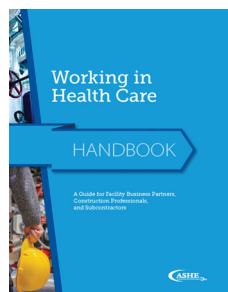
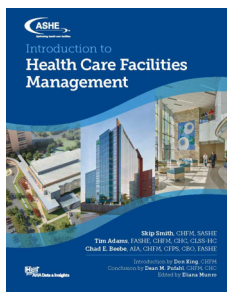
ASHE members can explore and download all available monographs at: ashe.org/monographs.



© 2022 American Society for Health Care Engineering

43

Publications:



1. *Introduction to Health Care Facilities Management*
2. *Working in Health Care: A Guide for Facility Business Partners, Construction Professionals, and Subcontractors*
3. *Developing Code-Compliant Integrated Fire Protection and Life Safety Inspection, Testing and Maintenance Programs*
4. *ANSI/ASHRAE/ASHE Standard 189.3-2021, Design, Construction and Operation of Sustainable High-Performance Health Care Facilities*

To view these and more, visit ashe.org and click on "Store".

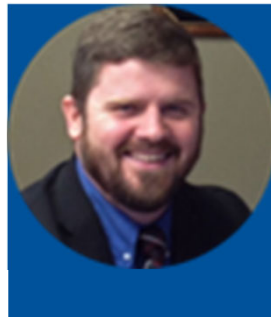
© 2022 American Society for Health Care Engineering

44



© 2022 American Society for Health Care Engineering

Thank You!



Shay Rankhorn, SASHE, CHFM, CHC
 Sr. Dir. Facilities Management, Quorum Health
 President, American Society for Healthcare
 Engineering
 Phone: 615-221-3760 Mobile: 256-653-0077
 1573 Mallory Lane, Brentwood, TN 37027
srankhorn@ghcus.com

Support: Victoria Pointer
 Service Coordinator
 (615) 221-3674, VPointer@ghcus.com

© 2022 American Society for Health Care Engineering,
 a professional membership group of the American Hospital Association
 155 N. Wacker Drive, Suite 400 | Chicago, IL 60606
ashe.org | ashe@aha.org | 312-422-3800

